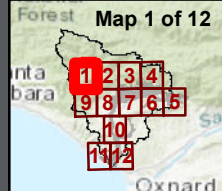


Three Oaks, LLC

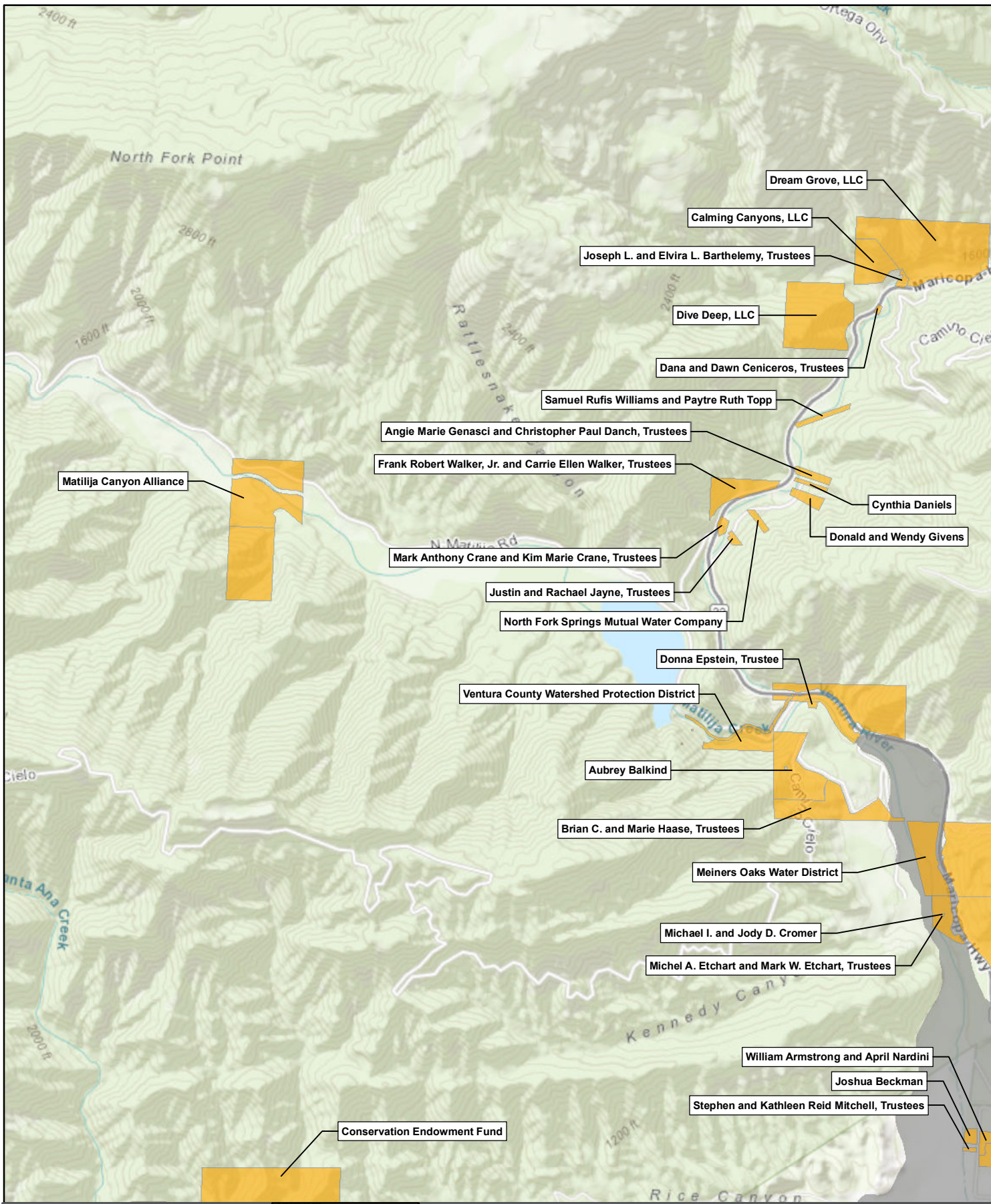
Legend

- Ventural River Watershed
- Appearing Parties Parcels
- Groundwater Basin



Parcels of Appearing Parties
 Ventura River Watershed Adjudication
 Ventura County, CA

2999 Oak Road, Suite 710, Walnut Creek, CA 94597
 Phone (+1) 925-935-9920 Fax (+1) 925-935-5368
 www.cardno.com



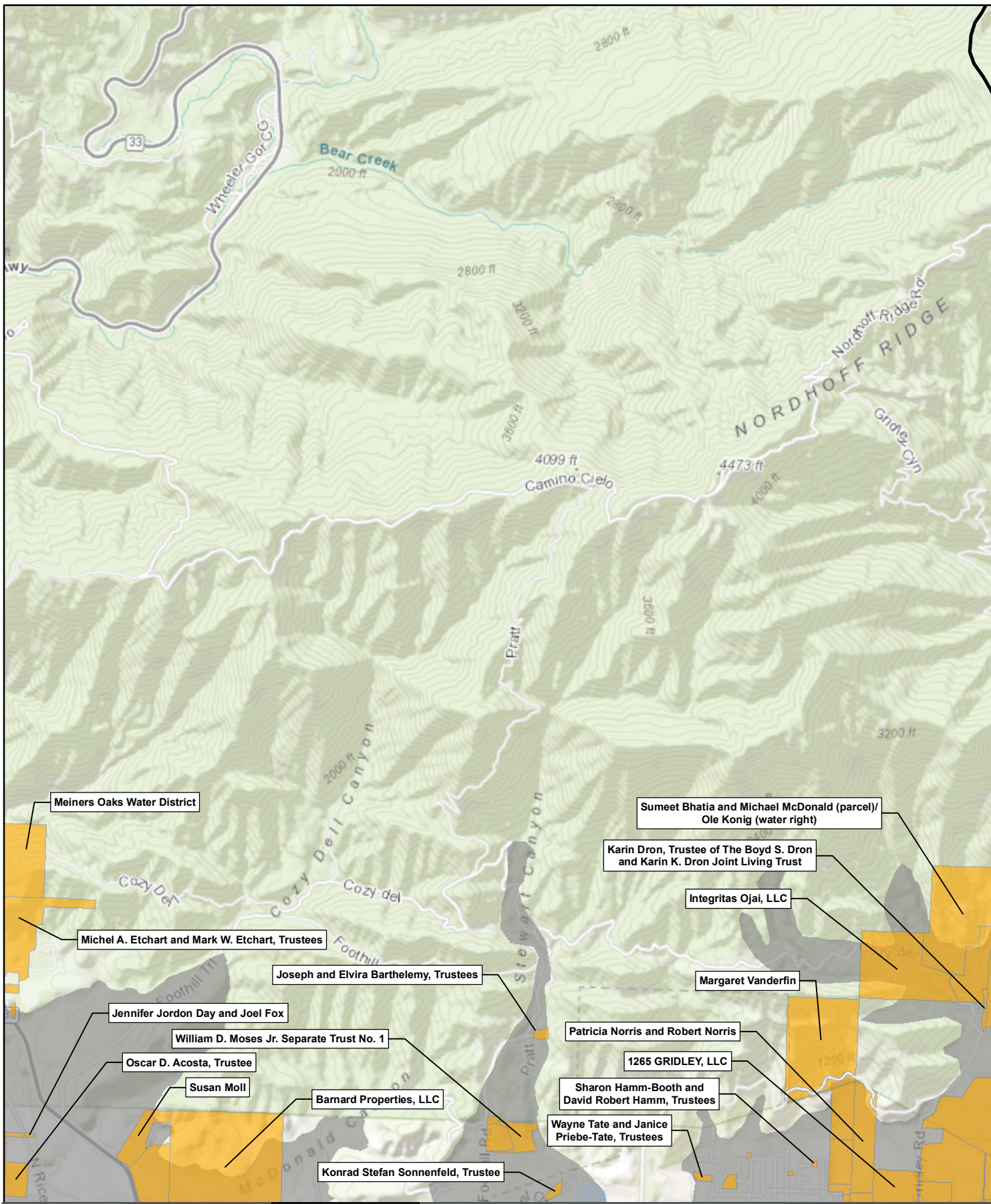
Legend

- Ventural River Watershed
- Appearing Parties Parcels
- Groundwater Basin

Map 2 of 12

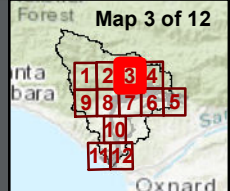
Parcels of Appearing Parties
 Ventura River Watershed Adjudication
 Ventura County, CA

2999 Oak Road, Suite 710, Walnut Creek, CA 94597
 Phone (+1) 925-935-9920 Fax (+1) 925-935-5368
 www.cardno.com



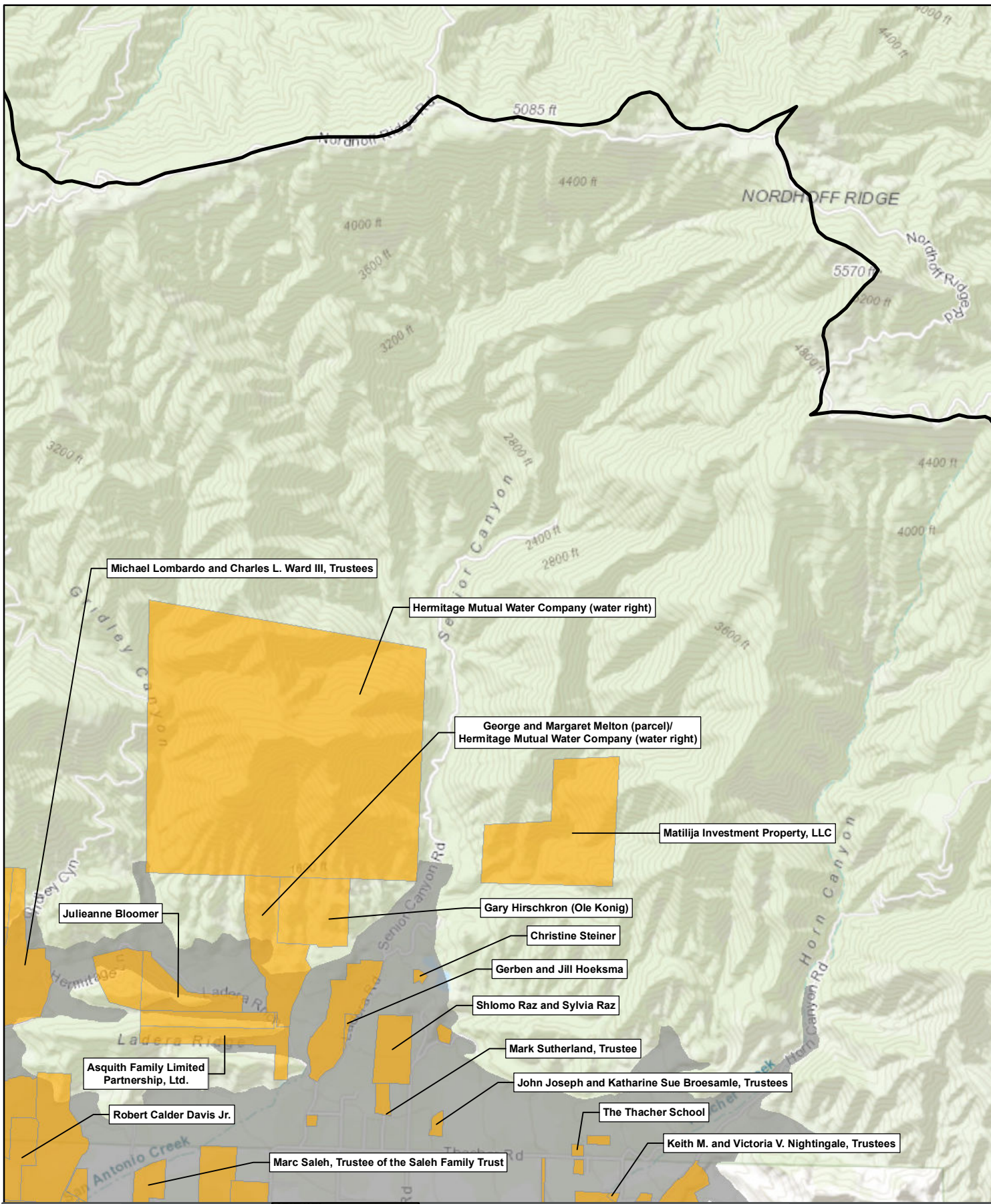
Legend

- Ventural River Watershed
- Appearing Parties Parcels
- Groundwater Basin



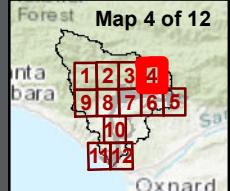
Parcels of Appearing Parties
 Ventura River Watershed Adjudication
 Ventura County, CA

2999 Oak Road, Suite 710, Walnut Creek, CA 94597
 Phone (+1) 925-935-9920 Fax (+1) 925-935-5368
 www.cardno.com



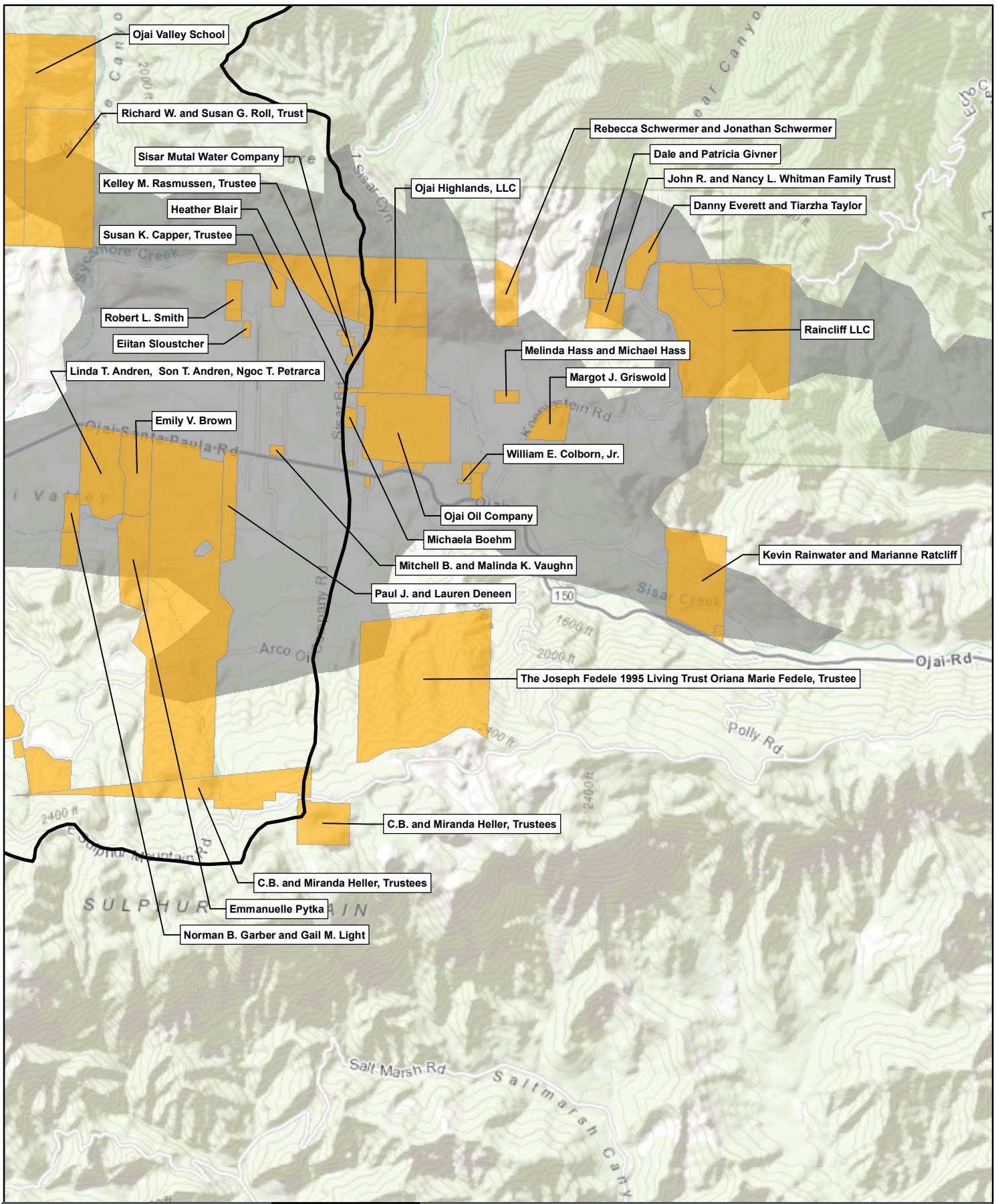
Legend

- Ventura River Watershed
- Appearing Parties Parcels
- Groundwater Basin



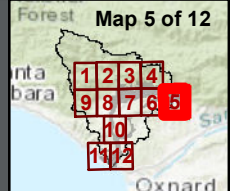
Parcels of Appearing Parties
 Ventura River Watershed Adjudication
 Ventura County, CA

2999 Oak Road, Suite 710, Walnut Creek, CA 94597
 Phone (+1) 925-935-9920 Fax (+1) 925-935-5368
 www.cardno.com



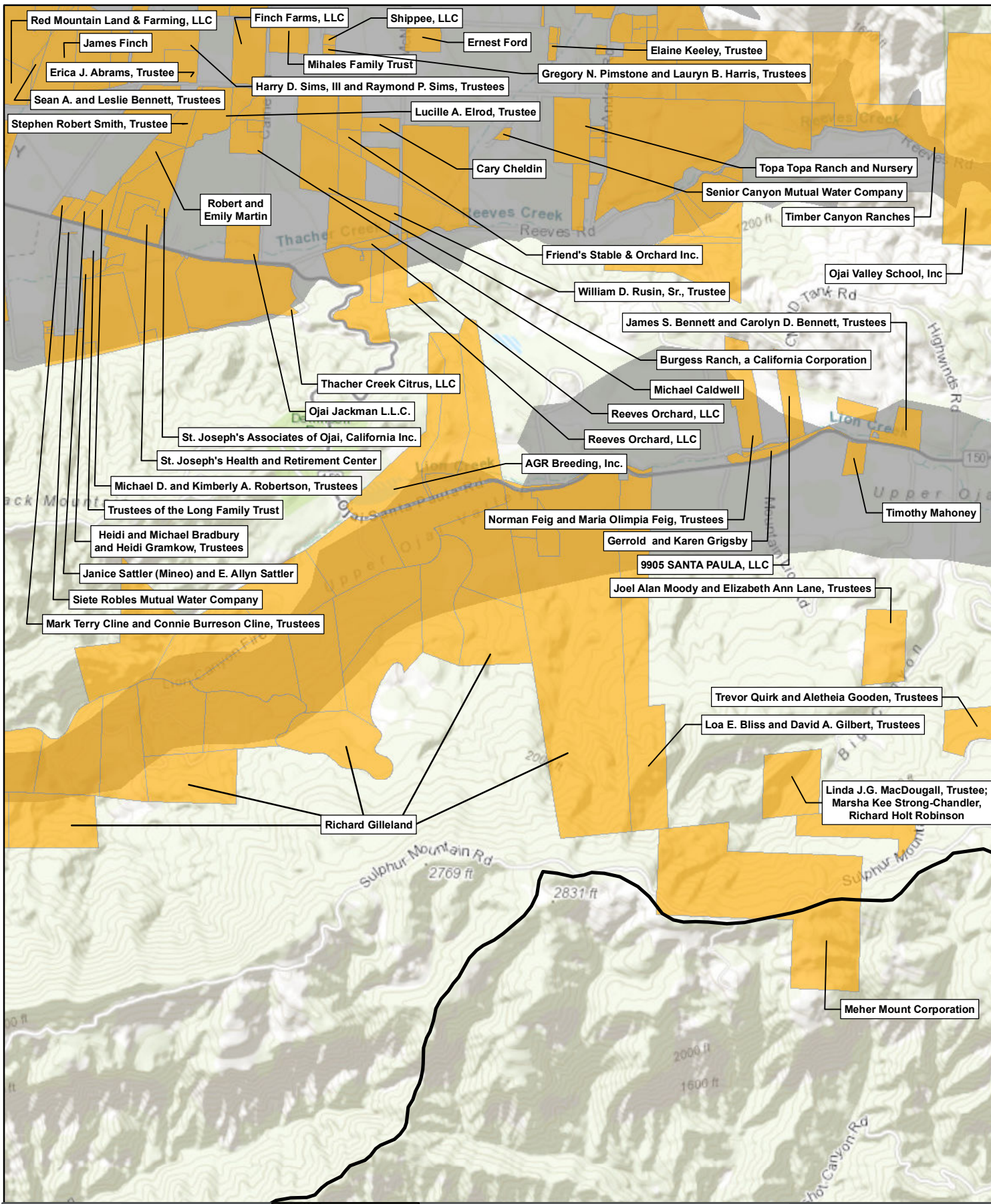
Legend

- Ventura River Watershed
- Appearing Parties Parcels
- Groundwater Basin



Parcels of Appearing Parties
 Ventura River Watershed Adjudication
 Ventura County, CA

2999 Oak Road, Suite 710, Walnut Creek, CA 94597
 Phone (+1) 925-935-9920 Fax (+1) 925-935-5368
 www.cardno.com



Legend

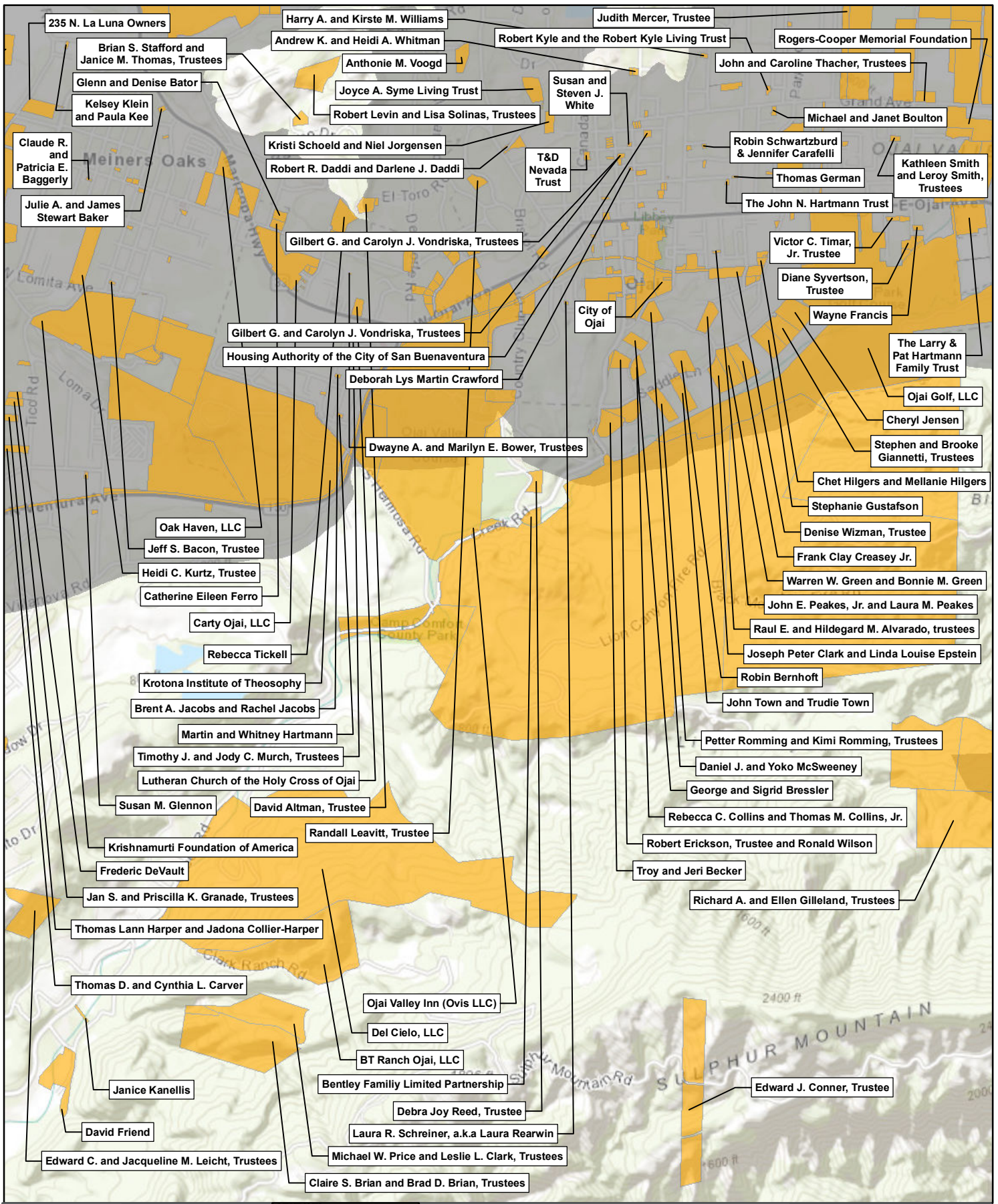
- Ventural River Watershed
- Appearing Parties Parcels
- Groundwater Basin

Map 6 of 12

Parcels of Appearing Parties

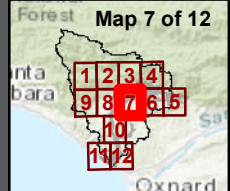
Ventura River Watershed Adjudication
Ventura County, CA

2999 Oak Road, Suite 710, Walnut Creek, CA 94597
Phone (+1) 925-935-9920 Fax (+1) 925-935-5368
www.cardno.com



Legend

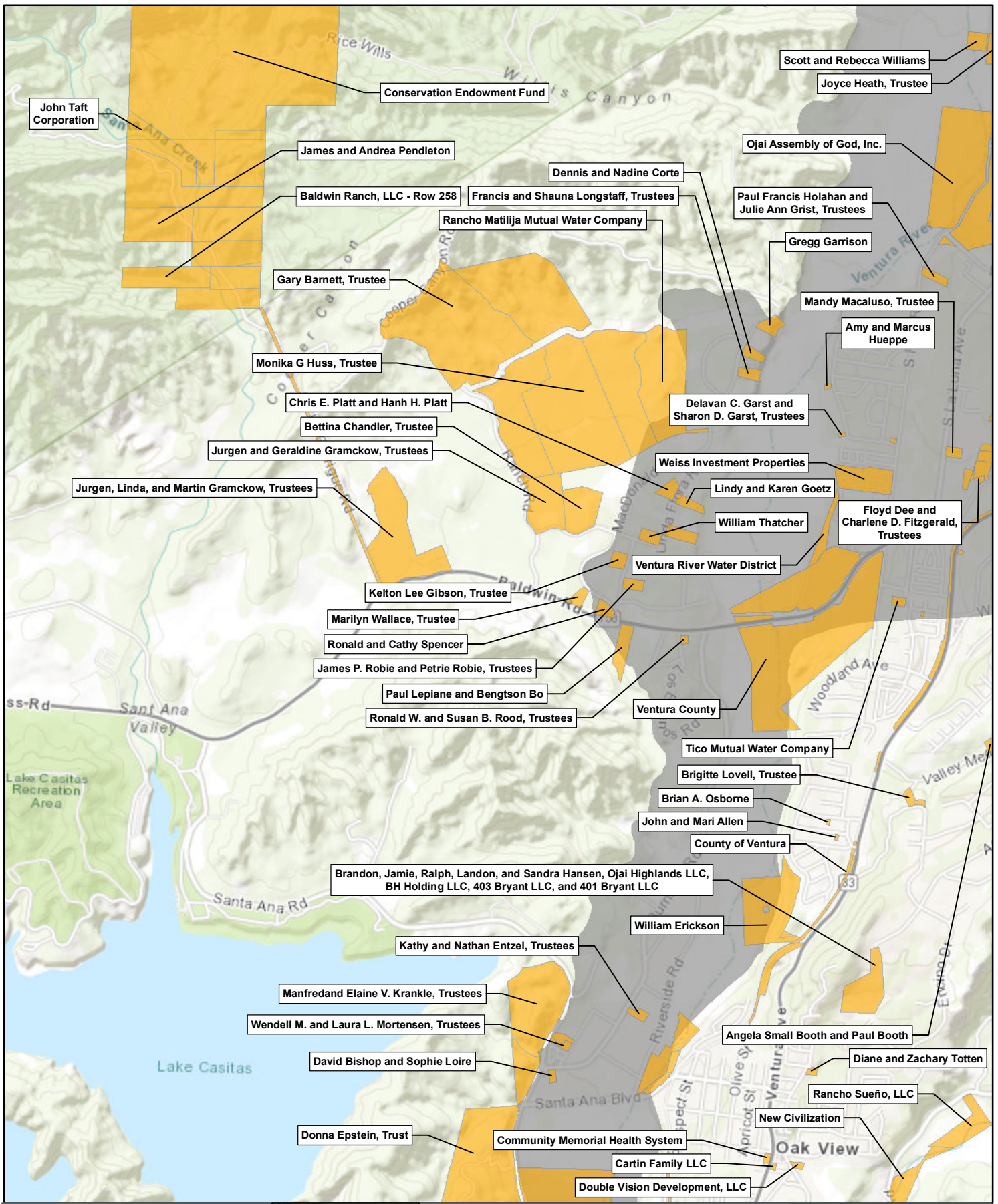
- Ventural River Watershed
- Appearing Parties Parcels
- Groundwater Basin



Parcels of Appearing Parties
 Ventura River Watershed Adjudication
 Ventura County, CA

Cardno

2999 Oak Road, Suite 710, Walnut Creek, CA 94597
 Phone (+1) 925-935-9920 Fax (+1) 925-935-5368
 www.cardno.com



Legend

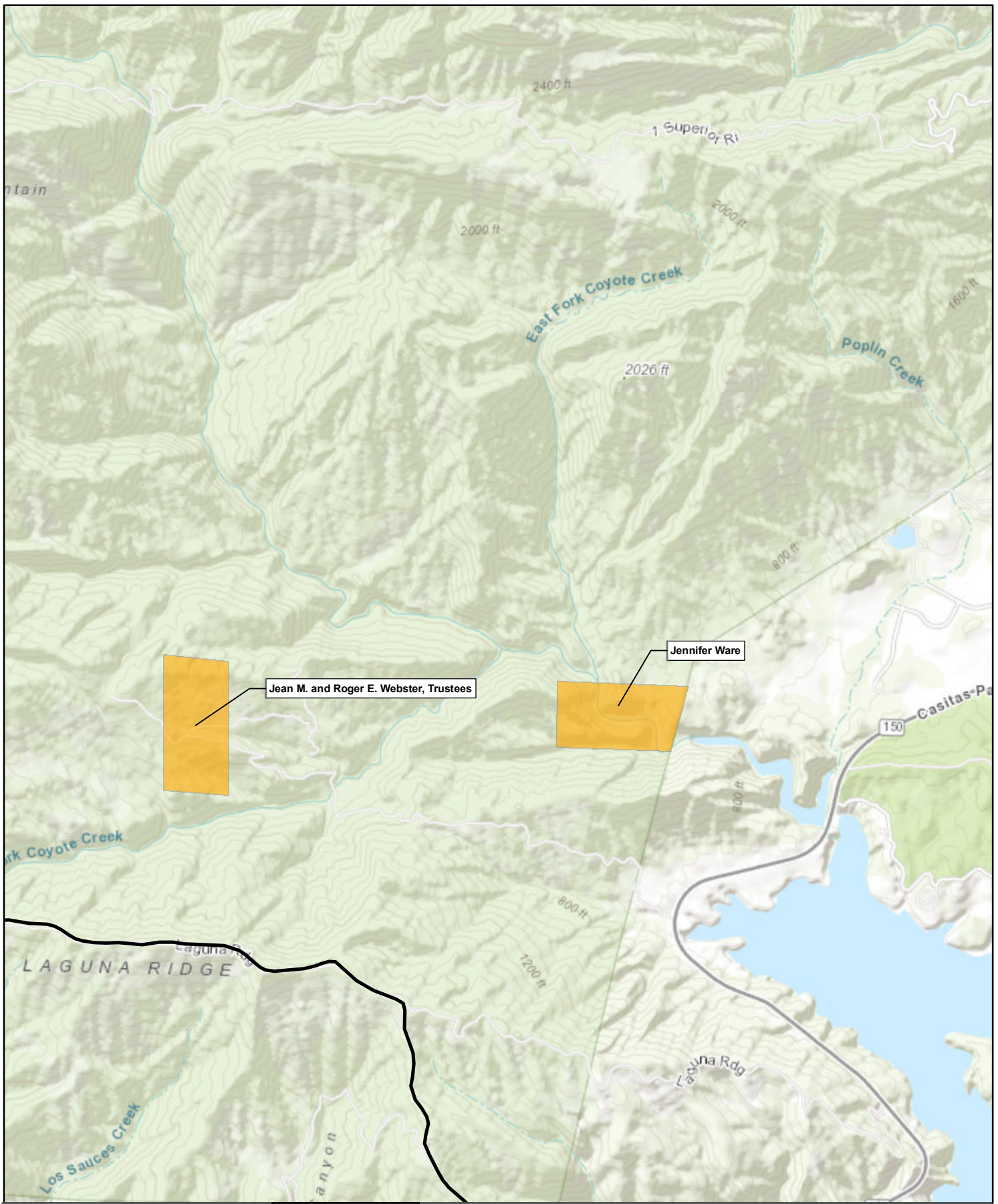
- Ventural River Watershed
- Appearing Parties Parcels
- Groundwater Basin

Map 8 of 12

Parcels of Appearing Parties

Ventura River Watershed Adjudication
Ventura County, CA

2999 Oak Road, Suite 710, Walnut Creek, CA 94597
Phone (+1) 925-935-9920 Fax (+1) 925-935-5368
www.cardno.com



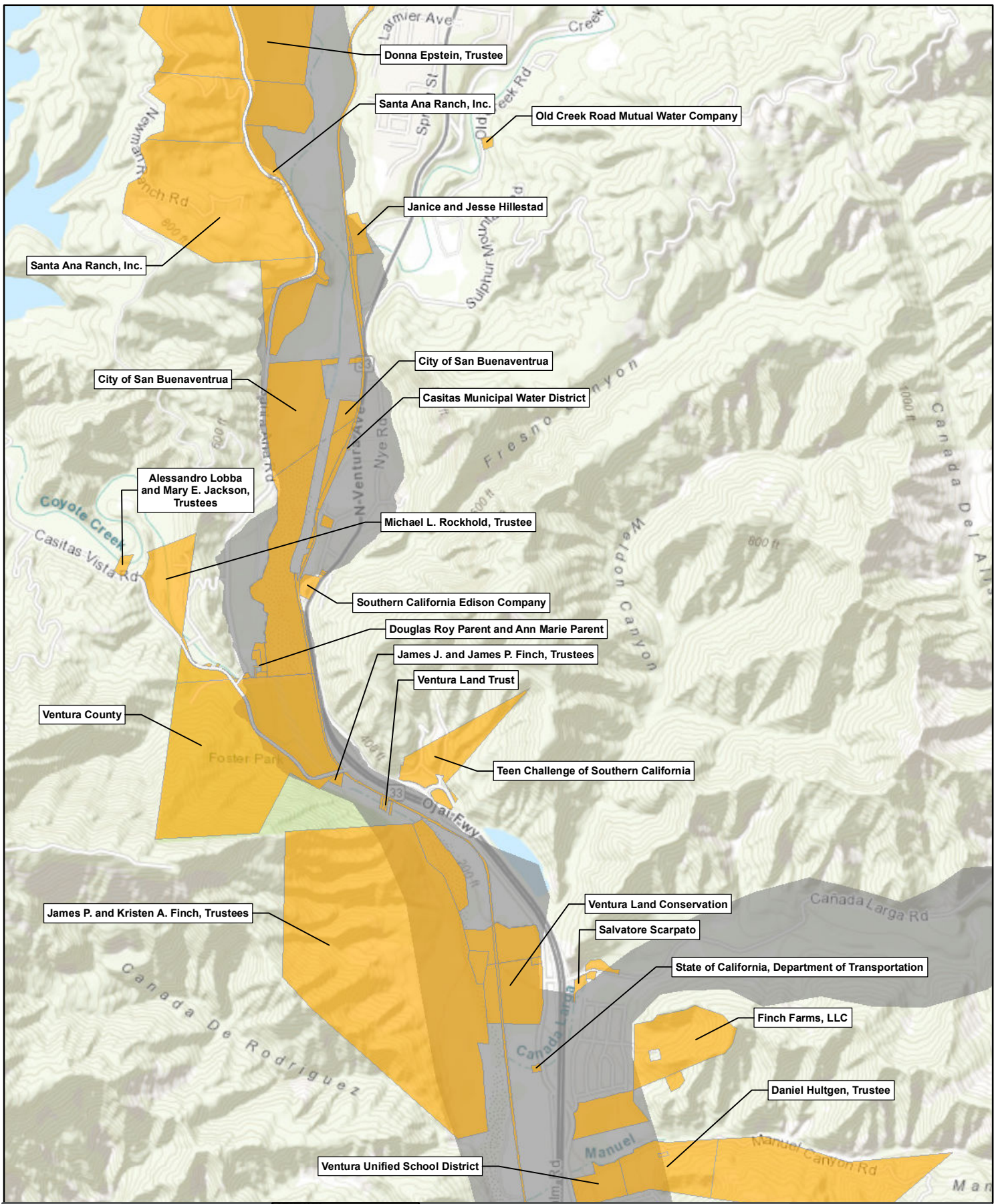
Legend

- Ventura River Watershed
- Appearing Parties Parcels
- Groundwater Basin

Map 9 of 12

Parcels of Appearing Parties
 Ventura River Watershed Adjudication
 Ventura County, CA

2999 Oak Road, Suite 710, Walnut Creek, CA 94597
 Phone (+1) 925-935-9920 Fax (+1) 925-935-5368
 www.cardno.com



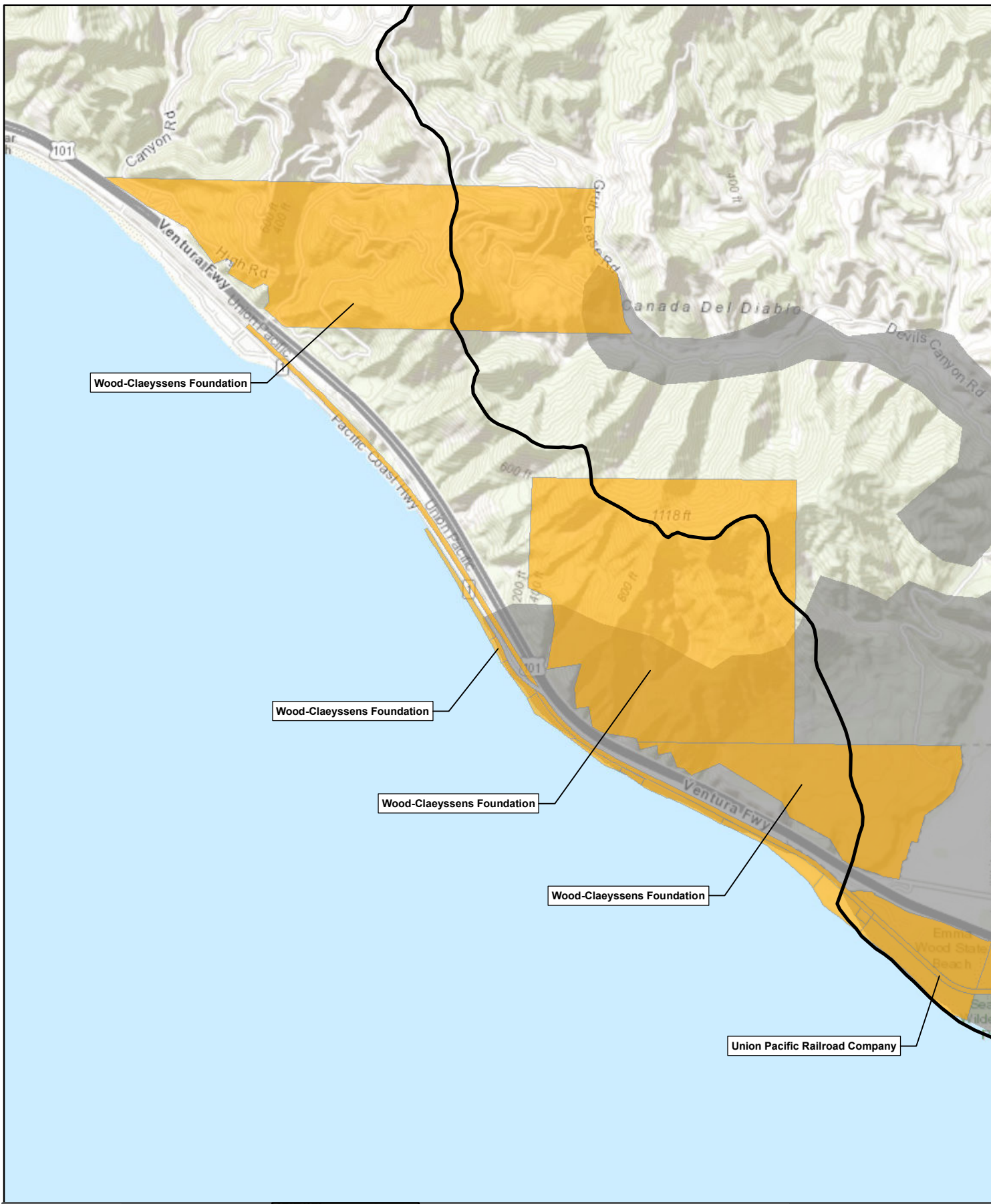
Legend

- Ventural River Watershed
- Appearing Parties Parcels
- Groundwater Basin

Map 10 of 12

Parcels of Appearing Parties
 Ventura River Watershed Adjudication
 Ventura County, CA

2999 Oak Road, Suite 710, Walnut Creek, CA 94597
 Phone (+1) 925-935-9920 Fax (+1) 925-935-5368
 www.cardno.com



Legend

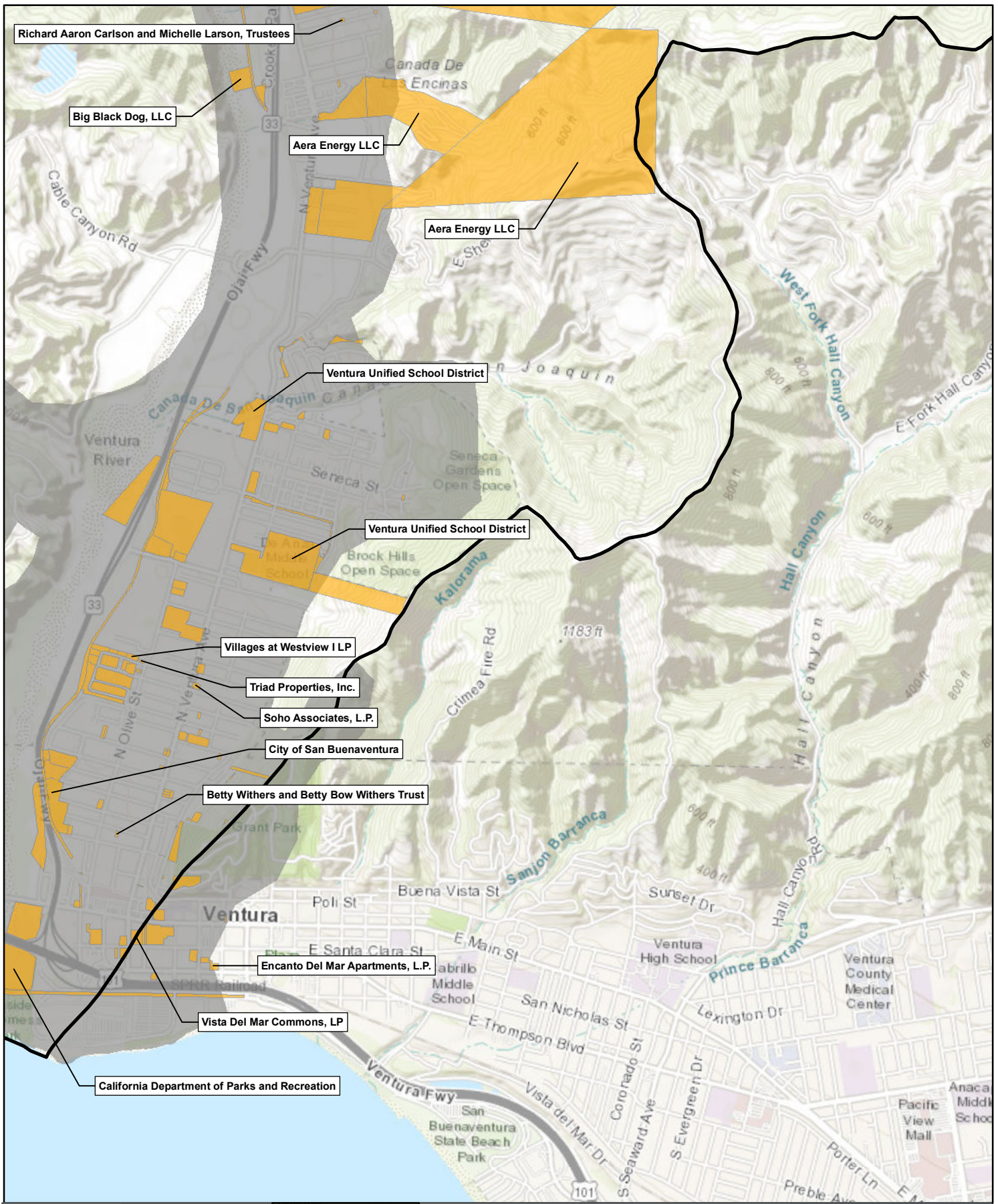
- Ventura River Watershed
- Appearing Parties Parcels
- Groundwater Basin

Map 11 of 12

Oxnard

Parcels of Appearing Parties
 Ventura River Watershed Adjudication
 Ventura County, CA

2999 Oak Road, Suite 710, Walnut Creek, CA 94597
 Phone (+1) 925-935-9920 Fax (+1) 925-935-5368
 www.cardno.com



Richard Aaron Carlson and Michelle Larson, Trustees

Big Black Dog, LLC

Aera Energy LLC

Aera Energy LLC

Ventura Unified School District

Ventura Unified School District

Villages at Westview I LP

Triad Properties, Inc.

Soho Associates, L.P.

City of San Buenaventura

Betty Withers and Betty Bow Withers Trust

Encanto Del Mar Apartments, L.P.

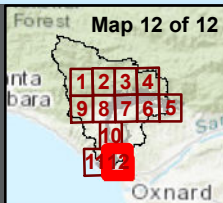
Vista Del Mar Commons, LP

California Department of Parks and Recreation



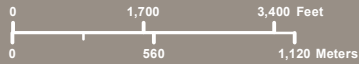
Legend

- Ventural River Watershed
- Appearing Parties Parcels
- Groundwater Basin



Parcels of Appearing Parties

Ventura River Watershed Adjudication Ventura County, CA



2999 Oak Road, Suite 710, Walnut Creek, CA 94597
 Phone (+1) 925-935-9920 Fax (+1) 925-935-5368
www.cardno.com