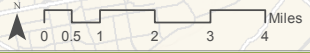


Data Sources: CDWR Bulletin 118, Kear Groundwater, Ventura County Watershed Protection District, Ojai Basin GMA, Daniel B. Stephens & Associates, Inc.
 Map Created by GreenInfo Network using Esri software, Jan. 2015 www.greeninfo.org



Groundwater Basins

Ventura River Watershed

| Groundwater Basin | Acres | Sq. Mi. | Shallow Depth to Water (ft.) | Max. Capacity | Avg. Well Yield | Active Wells | Approx. Safe Yield |
|---------------------|-------|---------|------------------------------|-----------------------|-----------------|--------------|-----------------------|
| Upper Ojai | 2,840 | 4.4 | 0-40 | 5,681 AF | 50 gpm | 95 | Unavail. |
| Ojai Valley | 6,471 | 10.1 | 0-80 | 85,000 AF | 383 gpm | 149 | 5,026 AF |
| Upper Ventura River | 9,360 | 14.6 | 0-5 | 35,118 AF | 600 gpm | 160 | 9,482 AF |
| Lower Ventura River | 6,090 | 9.5 | 3-13 | 8,743 AF ^a | 20 gpm | 16 | 2,130 AF ^b |



^a - Represents unconsolidated alluvium
^b - Preliminary estimate, based on groundwater balance for water years 1997-2007
 Source: Daniel B. Stephens & Associates, Inc. 2010 & 2013

Figure 3.3.3.2 Groundwater Basins Map

Data sources: See Table 3.4.2.1.3 Groundwater Basins Map Data Sources in "3.4.2 Water Supplies" for an explanation of the various data in the table.

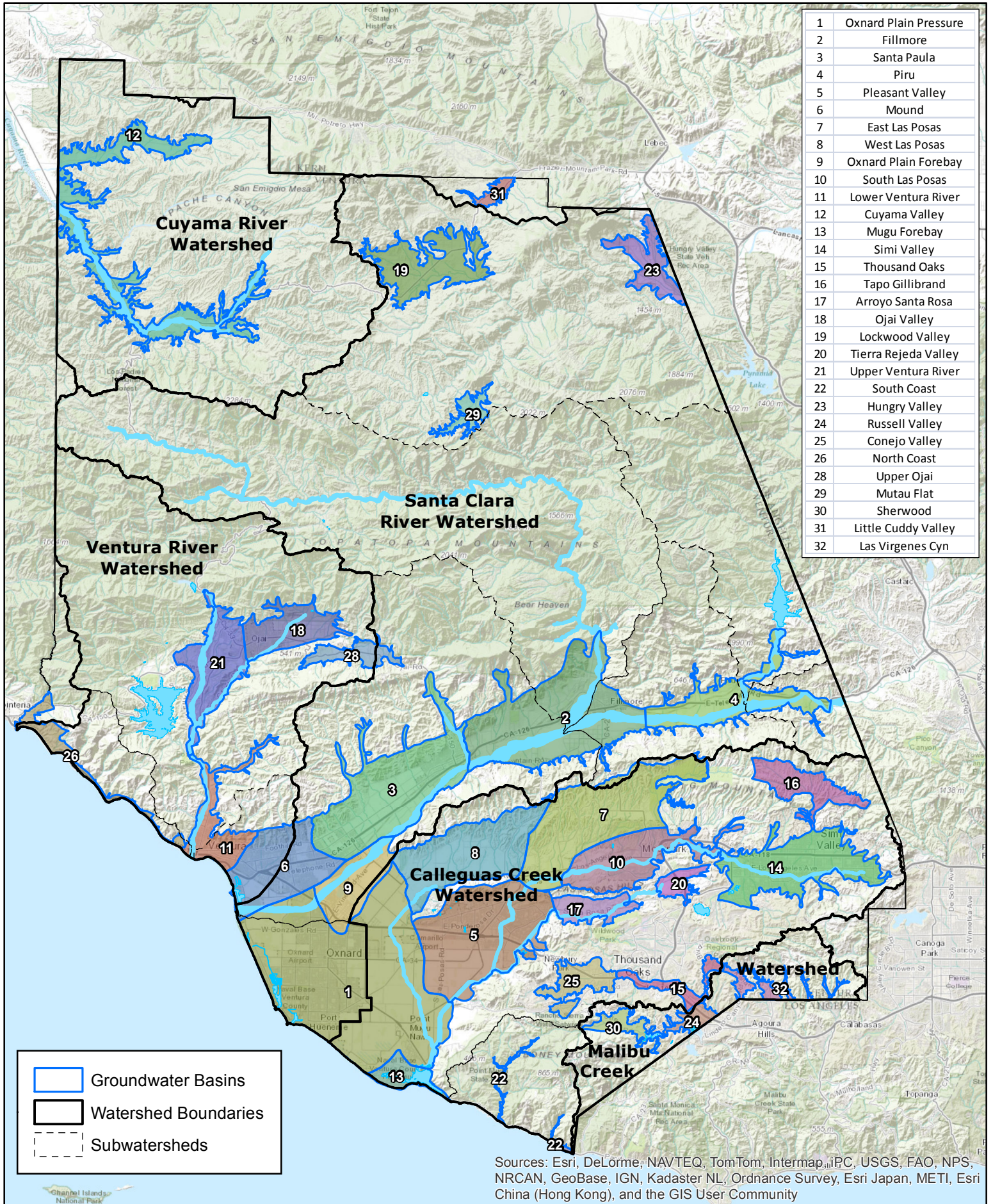


Figure 3-8
Groundwater Basins
WCVC IRWM Region



Disclaimer: this map was created by the Ventura County Resource Management Agency, Mapping Services - GIS, which is designed and operated solely for the convenience of the County and related public agencies. The County does not warrant the accuracy of this map and no decision involving a risk of economic loss or physical injury should be made in reliance therein.



Ventura County
 Resource Management Agency
 Information Systems Department
 Map created on 04/07/2014



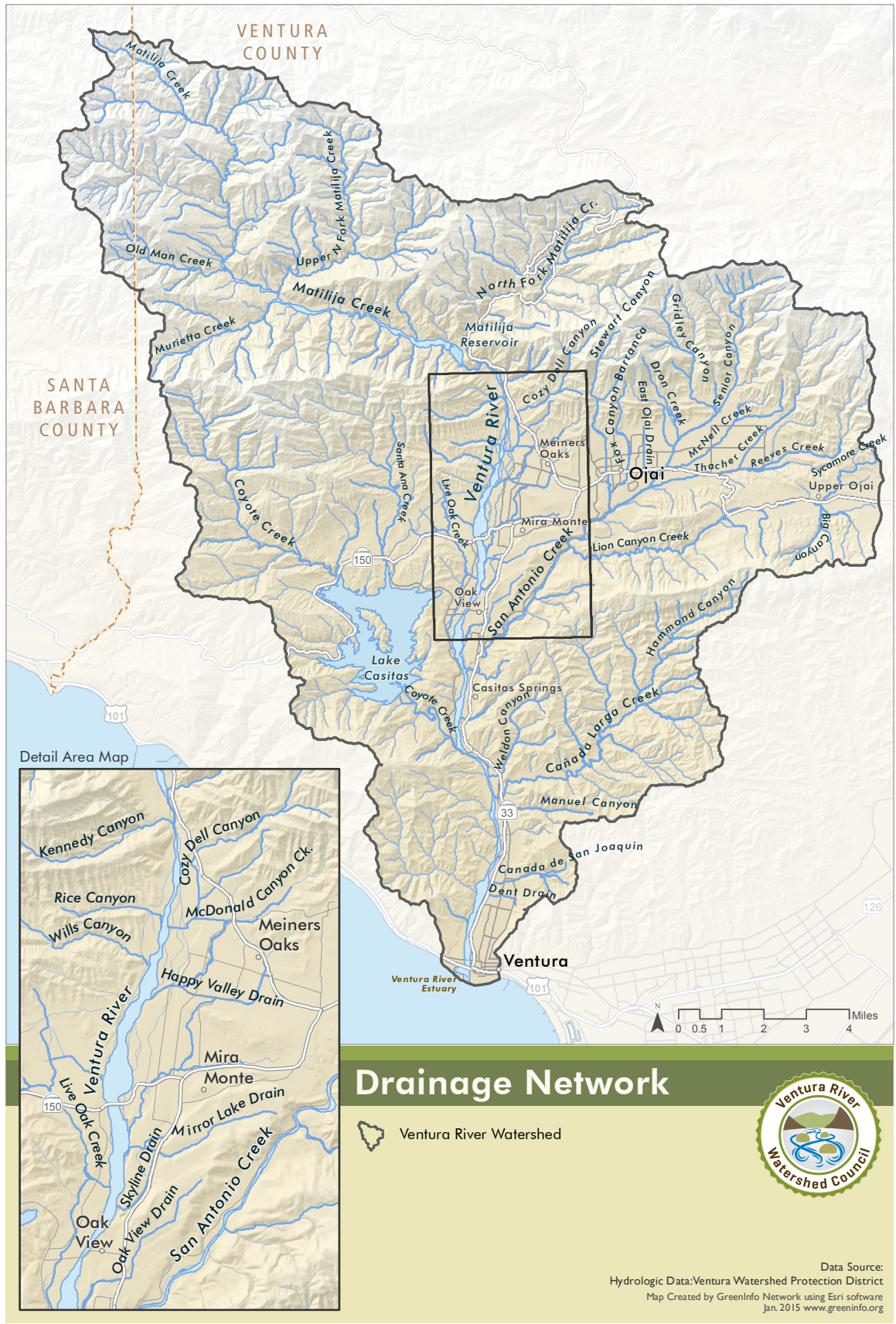


Figure 3.3.1.1.1 Drainage Network Map